

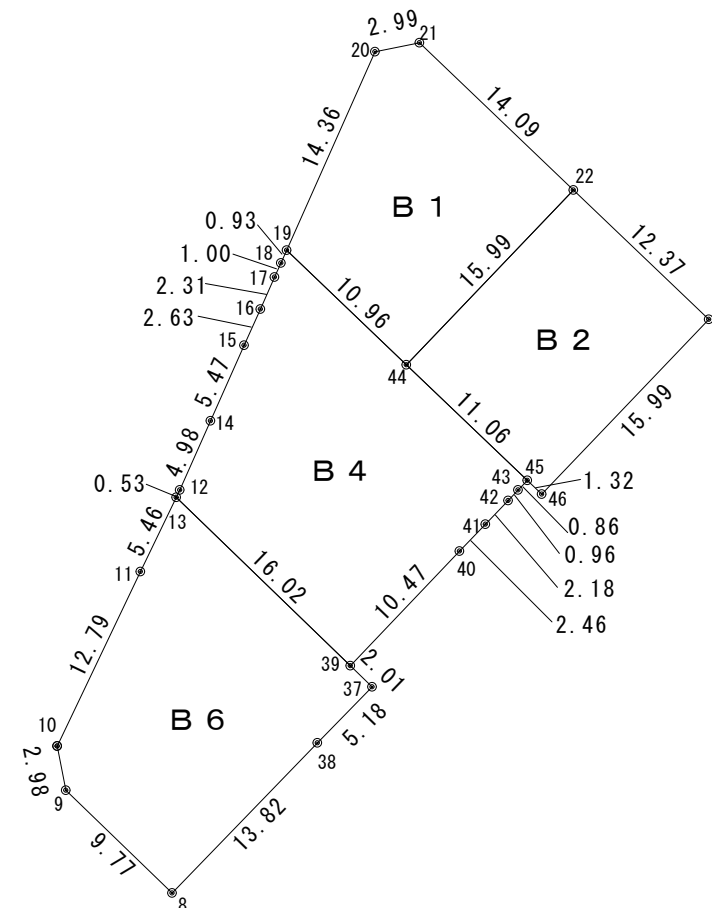


区画		B1				
測点名	境界標	X座標	Y座標	Y _{n+1} -Y _{n-1}	X _n (Y _{n+1} -Y _{n-1})	
20		81781.849	-15514.494	8.787	718617.107163	
21		81782.449	-15511.563	13.117	1072740.383533	
22		81772.711	-15501.377	-0.863	-70569.849593	
44		81761.145	-15512.426	-18.973	-1551254.204085	
19		81768.729	-15520.350	-2.068	-169097.731572	
倍面積					435.705446	
面積					217.8527230	
地積					217.85 m ²	
坪数					65.90 坪	

区画		B2				
測点名	境界標	X座標	Y座標	Y _{n+1} -Y _{n-1}	X _n (Y _{n+1} -Y _{n-1})	
22		81772.711	-15501.377	19.995	1635045.356445	
23		81764.159	-15492.431	-2.101	-171786.498059	
46		81752.587	-15503.478	-12.002	-981194.549174	
45		81753.499	-15504.433	-8.948	-731530.309052	
44		81761.145	-15512.426	3.056	249862.059120	
倍面積					396.059280	
面積					198.0296400	
地積					198.02 m ²	
坪数					59.90 坪	

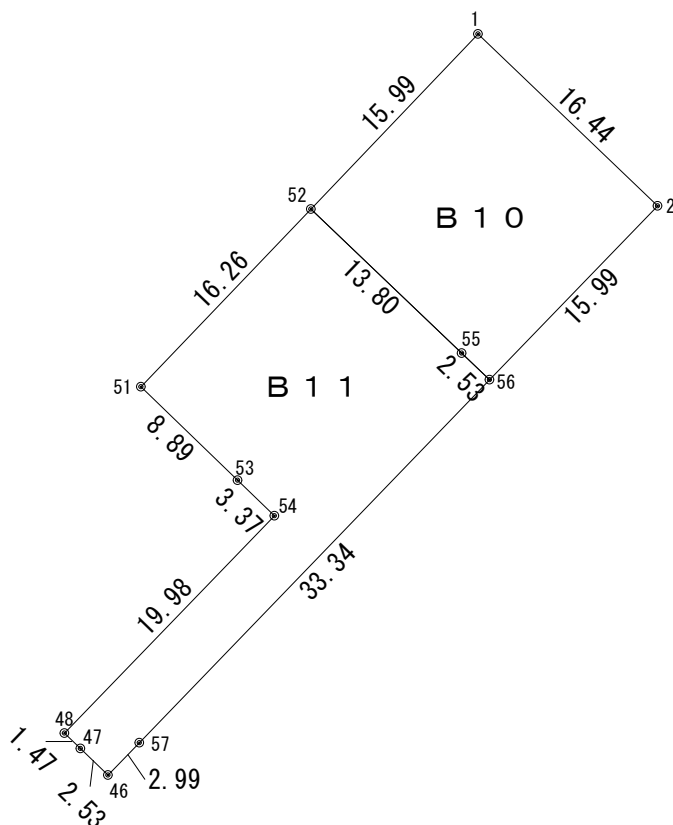
区画		B4				
測点名	境界標	X座標	Y座標	Y _{n+1} -Y _{n-1}	X _n (Y _{n+1} -Y _{n-1})	
19		81768.729	-15520.350	8.304	679007.525616	
44		81761.145	-15512.426	15.917	1301392.144965	
45		81753.499	-15504.433	7.395	604567.125105	
43		81752.876	-15505.031	-1.265	-103417.388140	
42		81752.179	-15505.698	-2.177	-177974.493683	
41		81750.604	-15507.208	-3.214	-262746.441256	
40		81748.821	-15508.912	-8.931	-730098.720351	
39		81741.240	-15516.139	-18.742	-1531994.320080	
12		81752.391	-15527.654	-11.283	-922412.227653	
13		81752.875	-15527.422	2.262	184925.003250	
14		81757.432	-15525.392	4.260	348286.660320	
15		81762.429	-15523.162	3.306	270306.590274	
16		81764.838	-15522.086	2.020	165164.972760	
17		81766.955	-15521.142	1.356	110875.990980	
18		81767.877	-15520.730	0.792	64760.158584	
倍面積					642.580691	
面積					321.2903455	
地積					321.29 m ²	
坪数					97.19 坪	

区画		B6				
測点名	境界標	X座標	Y座標	Y _{n+1} -Y _{n-1}	X _n (Y _{n+1} -Y _{n-1})	
12		81752.391	-15527.654	13.871	1133987.415561	
39		81741.240	-15516.139	12.962	1059529.952880	
37		81739.842	-15514.692	-2.165	-176966.757930	
38		81736.125	-15518.304	-13.234	-1081695.878250	
8		81726.195	-15527.926	-16.645	-1360332.515775	
9		81732.998	-15534.949	-7.604	-621497.716792	
10		81735.922	-15535.530	4.939	403693.718758	
11		81747.463	-15530.010	7.876	643843.018588	
倍面積					561.237040	
面積					280.6185200	
地積					280.61 m ²	
坪数					84.88 坪	



木津の庄 B10・B11

(20-3-1・20-3-2-1/20-3-2-2)

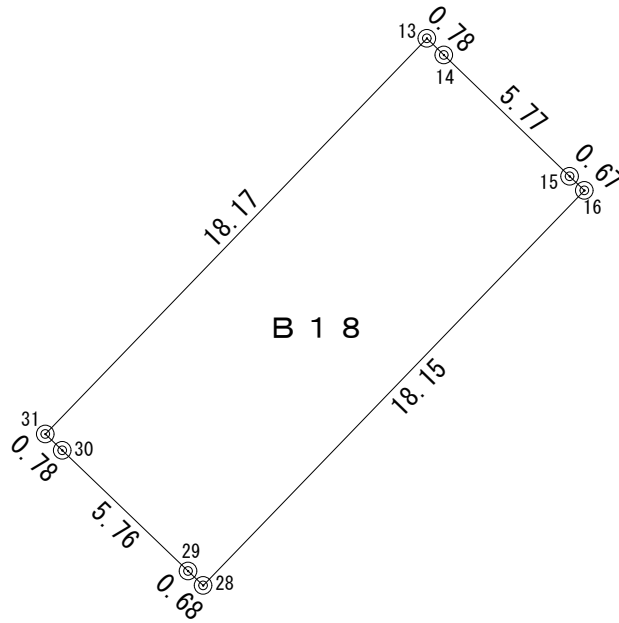


S=1/500

区画		B10				
測点名	境界標	X座標	Y座標	Y _{n+1} -Y _{n-1}	X _n (Y _{n+1} -Y _{n-1})	
1		81735.998	-15462.974	22.945	1875432.474110	
2		81724.634	-15451.083	0.766	62601.069644	
56		81713.145	-15462.208	-12.955	-1058593.793475	
55		81714.901	-15464.038	-11.820	-965870.129820	
52		81724.435	-15474.028	1.064	86954.798840	
倍面積					524.419299	
面積					262.2096495	
地積					262.20 m ²	
坪数					79.31 坪	

区画		B11				
測点名	境界標	X座標	Y座標	Y _{n+1} -Y _{n-1}	X _n (Y _{n+1} -Y _{n-1})	
52		81724.435	-15474.028	21.229	1734928.030615	
55		81714.901	-15464.038	11.820	965870.129820	
56		81713.145	-15462.208	-21.330	-1742941.382850	
57		81689.153	-15485.368	-25.238	-2061670.843414	
46		81686.998	-15487.446	-3.898	-318415.918204	
47		81688.759	-15489.266	-2.877	-235018.559643	
48		81689.782	-15490.323	12.824	1047589.764368	
54		81704.157	-15476.442	11.452	935676.005964	
53		81706.500	-15478.871	-8.825	-721059.862500	
51		81712.677	-15485.267	4.843	395734.494711	
倍面積					691.858867	
面積					345.9294335	
地積					345.92 m ²	
坪数					104.64 坪	

木津の庄 B18(20-1-⑧⑨⑩)

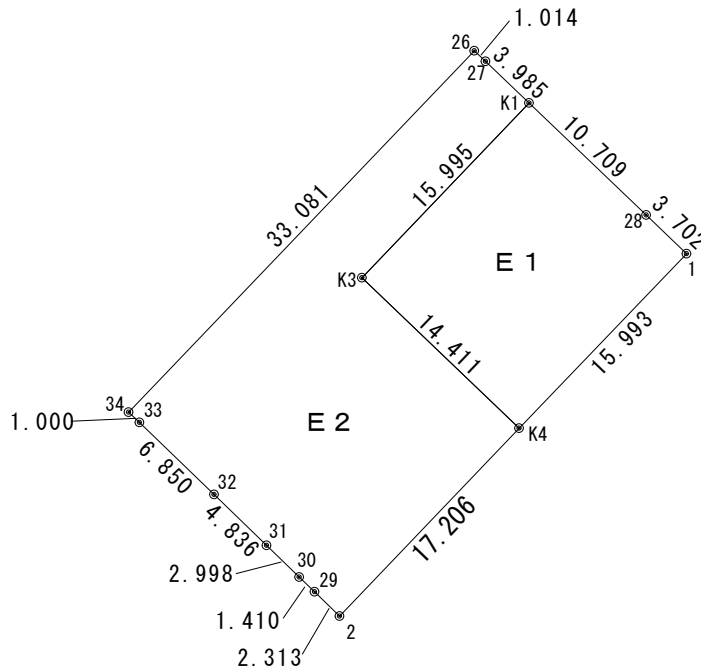
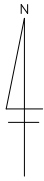


S=1/250

区 画		B18				
測点名	境界標	X座標	Y座標	$Y_{n+1}-Y_{n-1}$	$X_n(Y_{n+1}-Y_{n-1})$	
13		81631.763	-15416.875	13.184	1076233.163392	
14		81631.220	-15416.312	4.719	385217.727180	
15		81627.210	-15412.156	4.644	379076.763240	
16		81626.740	-15411.668	-12.124	-989642.595760	
28		81613.684	-15424.280	-13.105	-1069547.328820	
29		81614.156	-15424.773	-4.651	-379587.439556	
30		81618.145	-15428.931	-4.723	-385482.498835	
31		81618.688	-15429.496	12.056	983994.902528	
倍面積					262.693369	
面 積					131.3466845	
地 積					131.34 m ²	
坪 数					39.73 坪	

参考

木津の庄 E1, E2 (19-③, ⑤, ⑥)

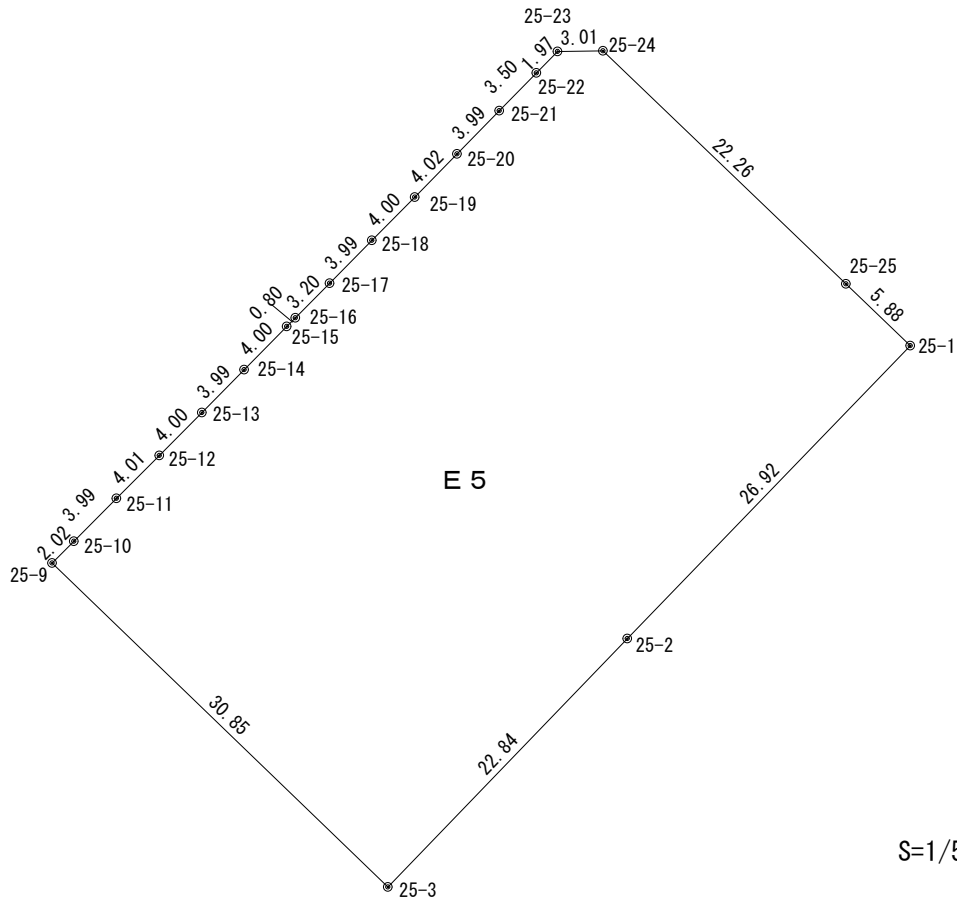
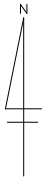


S=1/500

区画 E1		X座標	Y座標	Y _{n+1} -Y _{n-1}	X _n (Y _{n+1} -Y _{n-1})
測点名	境界標				
K1	交点	81748.729	-15476.291	18.804	1537203.100116
28		81741.329	-15468.549	10.418	851581.165522
1		81738.770	-15465.873	-8.386	-685461.325220
K4	交点	81727.219	-15476.935	-21.480	-1755500.664120
K3	交点	81737.176	-15487.353	0.644	52638.741344
倍面積					461.017642
面積					230.5088210
地積					230.50 m ²
坪数					69.72 坪

区画 E2		X座標	Y座標	Y _{n+1} -Y _{n-1}	X _n (Y _{n+1} -Y _{n-1})
測点名	境界標				
26		81752.185	-15479.905	23.612	1930332.592220
27		81751.483	-15479.172	3.614	295449.859562
K1	交点	81748.729	-15476.291	-8.181	-668786.351949
K3	交点	81737.176	-15487.353	-0.644	-52638.741344
K4	交点	81727.219	-15476.935	-1.483	-121201.465777
2		81714.792	-15488.836	-13.560	-1108052.579520
29		81716.405	-15490.495	-2.673	-218427.950565
30		81717.386	-15491.509	-3.168	-258880.678848
31		81719.472	-15493.663	-5.628	-459917.188416
32		81722.837	-15497.137	-8.399	-686390.107963
33		81727.599	-15502.062	-5.647	-461515.751553
34		81728.291	-15502.784	22.157	1810853.743687
倍面積					825.379534
面積					412.6897670
地積					412.68 m ²
坪数					124.83 坪

木津の庄 E5 (25-①②③)



S=1/500

区画 E5		X座標	Y座標	Y _{n+1} -Y _{n-1}	X _n (Y _{n+1} -Y _{n-1})
測点名	境界標				
25-24		81537.248	-15420.958	19.075	1555323.005600
25-25		81521.825	-15404.897	20.304	1655219.134800
25-1		81517.751	-15400.654	-14.453	-1178176.055203
25-2		81498.375	-15419.350	-34.556	-2816257.846500
25-3		81481.936	-15435.210	-38.059	-3101121.002224
25-9		81503.370	-15457.409	-20.768	-1692661.988160
25-10		81504.808	-15455.978	4.249	346313.929192
25-11		81507.640	-15453.160	5.650	460518.166000
25-12		81510.482	-15450.328	5.655	460941.775710
25-13		81513.325	-15447.505	5.628	458756.993100
25-14		81516.167	-15444.700	5.620	458120.858540
25-15		81519.012	-15441.885	3.383	275778.817596
25-16		81519.586	-15441.317	2.823	230129.791278
25-17		81521.863	-15439.062	5.061	412582.148643
25-18		81524.711	-15436.256	5.625	458576.499375
25-19		81527.557	-15433.437	5.642	459978.476594
25-20		81530.423	-15430.614	5.622	458364.038106
25-21		81533.277	-15427.815	5.256	428538.903912
25-22		81535.777	-15425.358	3.843	313341.991011
25-23		81537.186	-15423.972	4.400	358763.618400
				倍面積	3031.255770
				面積	1515.6278850
				地積	1515.62 m ²
				坪数	458.47 坪

地積測量図 縮尺 1:200

所在 高岡市木津 地内

求積表

地番 ① A				
NO	Xn	Yn	Yn+1-Yn-1	Xn · (Yn+1-Yn-1)
P3	81709.893	-15550.667	1.887	154186.568091
18×608+	81726.681	-15540.435	13.226	1080917.082906
19×607+	81727.062	-15537.441	8.157	666647.644734
P4	81722.058	-15532.278	-4.881	-398885.365098
P6	81705.572	-15542.322	-18.389	-1502483.763508
合計				382.167125
合計面積				191.0835625
地積				191.08 m ²

地番 ② B				
NO	Xn	Yn	Yn+1-Yn-1	Xn · (Yn+1-Yn-1)
P4	81722.058	-15532.278	17.468	1427520.909144
P5	81714.864	-15524.854	-2.628	-214746.662592
P7	81701.732	-15534.906	-17.488	-1427165.854576
P6	81705.572	-15542.322	2.628	214722.243216
合計				330.635192
合計面積				165.3175960
地積				165.31 m ²

地番 ③ C				
NO	Xn	Yn	Yn+1-Yn-1	Xn · (Yn+1-Yn-1)
17×609×計	81698.408	-15557.668	-9.532	-778749.225056
P3	81709.893	-15550.667	15.346	1253920.017978
P6	81705.572	-15542.322	15.761	1287761.520292
P7	81701.732	-15534.906	1.187	96979.955884
P8	81693.594	-15541.135	-22.762	-1859509.586628
合計				402.682470
合計面積				201.3412350
地積				201.34 m ²

地番 ④ D				
NO	Xn	Yn	Yn+1-Yn-1	Xn · (Yn+1-Yn-1)
P5	81714.864	-15524.854	14.639	1196223.894096
20×542×計	81710.419	-15520.267	7.717	630559.303423
21×541×計	81707.385	-15517.137	4.237	346194.190245
22×540×計	81706.313	-15516.030	-14.043	-1147401.753459
23×612	81690.702	-15531.180	-16.819	-1373955.916938
24×613	81691.186	-15532.849	-6.407	-523395.428702
25×610	81692.562	-15537.587	-8.286	-676904.568732
P8	81693.594	-15541.135	2.681	219020.525514
P7	81701.732	-15534.906	16.281	1330185.898692
合計				526.144139
合計面積				263.0720695
地積				263.07 m ²

地番 ⑤ E				
NO	Xn	Yn	Yn+1-Yn-1	Xn · (Yn+1-Yn-1)
22×540×計	81706.313	-15516.030	22.106	1806199.755178
1×543+	81699.572	-15509.074	6.997	571651.905284
2×586+	81696.565	-15509.033	-9.309	-760513.230495
3×539×計	81686.897	-15518.383	-22.147	-1809119.707859
23×612	81690.702	-15531.180	2.353	192218.221806
合計				436.943914
合計面積				218.4719570
地積				218.47 m ²

総合計面積	1039.2864200 m ²
-------	-----------------------------

地番	面積	単位
① A	191.0835625	m ²
② B	165.3175960	m ²
③ C	201.3412350	m ²
④ D	263.0720695	m ²
⑤ E	218.4719570	m ²

